



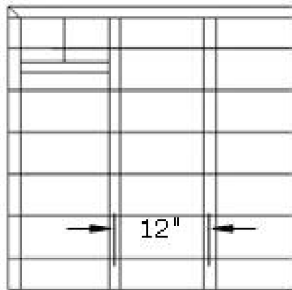
Redefining Outdoor Living.

**BEST
PRACTICES**

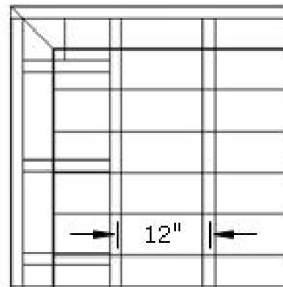
BEST PRACTICES - INSTALLATION PREP

- **TIVADEK** is rated for **16" O.C.**; **12" O.C.** for a more rigid feel
- **Diagonal Installation** at a **45° angle**, must be framed at **12" O.C.**

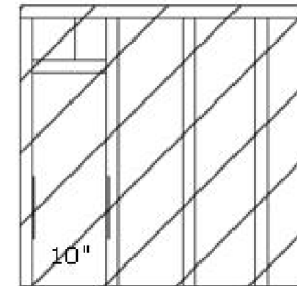
Basic Installation on 12" o.c Substructure



Picture Frame Border Installation on 12" o.c Substructure



Diagonal Installation 10" o.c Substructure



BEST PRACTICES - INSTALLATION PREP

Protect your substructure from water damage using **TIVACOAT**

- **Waterproof Membrane**
- **Seals around screws**
- **Easy Application**
- **Cost Effective**



FASTENING METHODS



**Pro Plug™ or Cortex™
Screw & Plug
100 & 300sq.ft.**



Camo™ Tool



HIDfast™



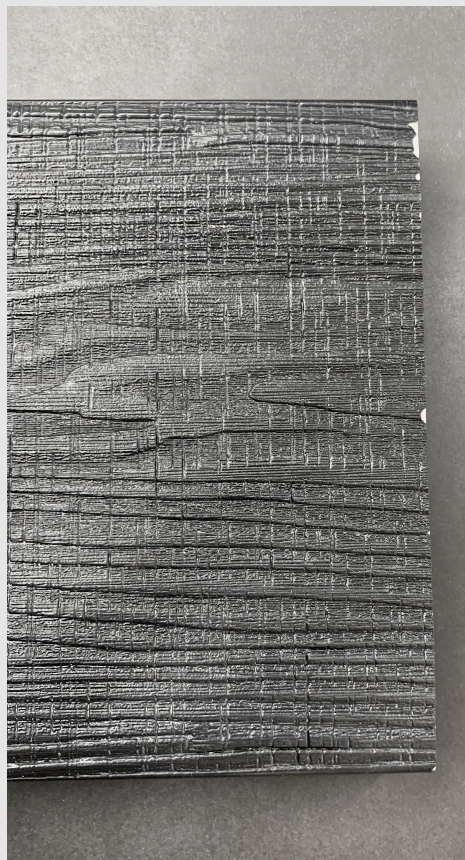
**2 1/2" Stainless
Colour matched
screws**

BEST PRACTICES – INSTALLATION

Always **use a sharp blade** when cutting TIVADEK

20' boards are designed for the convenience of the 10' lengths

Dull blades can cause **minor chips** in the cap of the board at cut points



BEST PRACTICES – INSTALLATION

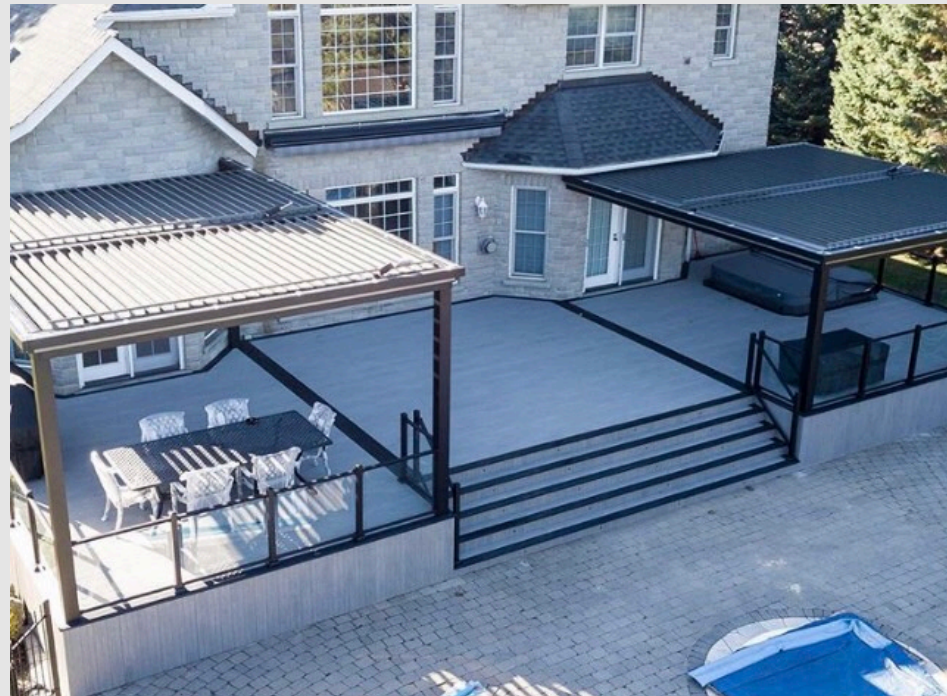
Install fasteners within **1/2"** of the **end of the board**

This helps to **stabilize** the board
and **control movement**



BEST PRACTICES – INSTALLATION

Use a **breaker board** to minimize visual appearance of **contraction**.



 **TIVADEK™**
Redefining Outdoor Living.

BEST PRACTICES – RISER

Install using **proper fascia screws**

The **8 5/8"** profile allows you to rip the board for a perfect custom **stair rise** every time

Use to wrap a **6x6 post**

- **Offset the boards**
- **No need for cutting**

Use as a **multipurpose cladding**



BEST PRACTICES – FASCIA

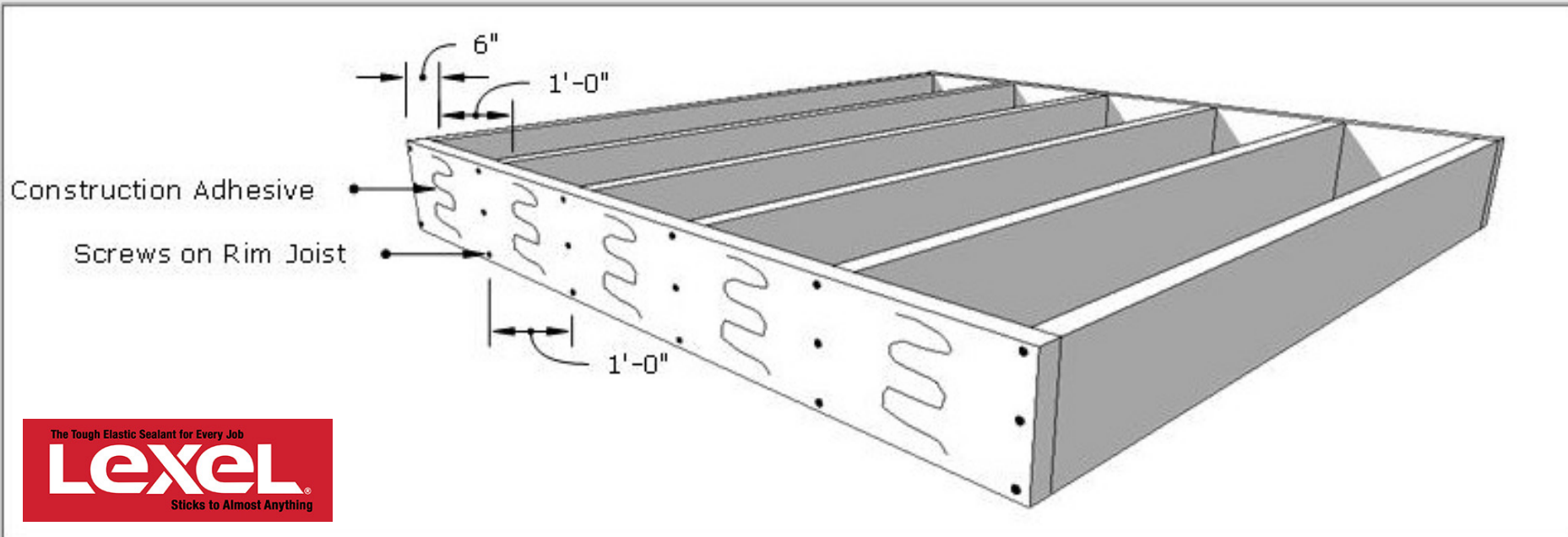
Install using **screw and plug**
system for a finished look with
no visible fasteners



$\frac{3}{4}$ " thickness allows Fascia to
be **mitred**



BEST PRACTICES – FASCIA



For best results, **TIVA Building Products** recommends alternating gluing and fastening every 6" using a clear elastic sealant, such as **Lexel**, to control movement.



BEST PRACTICES – MITRES

Recommend installing mitres
first thing in the morning when
the boards are the most **cool**



Charwood – **Paint the ends** of
mitres using a **black**
PVC paint to minimize
appearance of contraction



CARE & MAINTENANCE

AVOID using certain **bug sprays** and **aerosol sunscreens** on TIVADEK



AVOID **rubber backed mats**

*These contain **plasticizers** that can react with the cap and cause **discolouration**



Leave scraps for your homeowner to test

